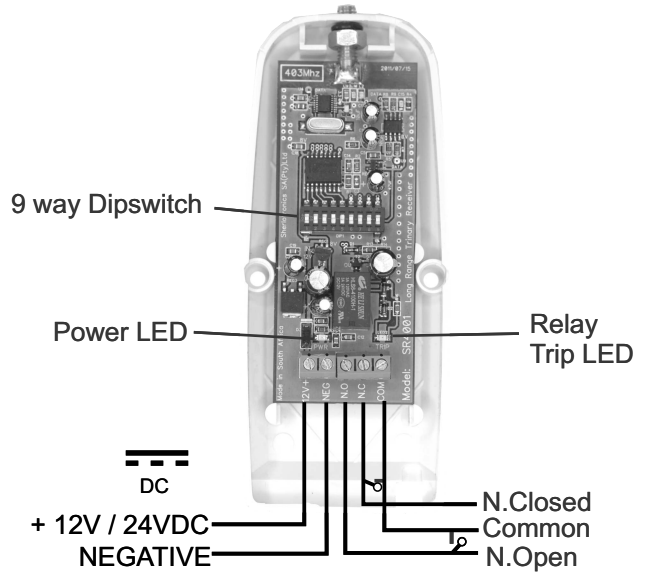
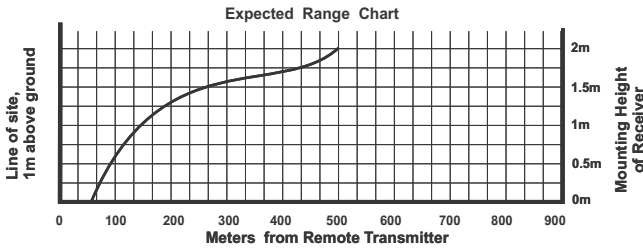


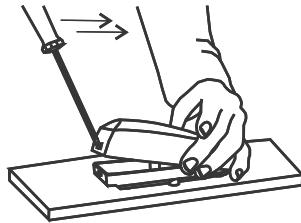
SPECIFICATIONS:

Encryption..... Trinary Encryption
 Frequency.....403.55MHz
 Receiving range..... 500m
 Power input range.....10 ~ 26V DC
 Current drain.....13mA, 12VDC
 Relay output times.....3 second momentary
 Dimensions.....65 X 48 x 20mm
 Weight Packed.....0.050kg / 50grams
 Warranty.....1 year
 PCB Revision no.....SR4001_V4
 Release date.....July 2013



Opening the lid

Insert a small 1-1.5mm flat screw driver into the slot at the back of the housing and lever the lid open.

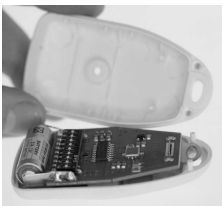


The units housing is IP-52 resistant, IE: Rain proof for vertical mounting. When mounting the unit externally, ensure that the housing is mounted vertically, with the aerial facing up. It is important to keep the aerial as far away from any transformer or high voltage device, as this will interfere with the units reception and reduce its receiving range. Mounting the unit so that the aerial is at least 30cm away from any metal cladding or electric fence wires.

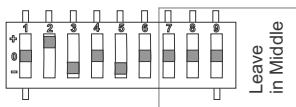
Programming a 4 Button Remote

Please follow the steps below to Set in remotes to the receiver.

Step 1.



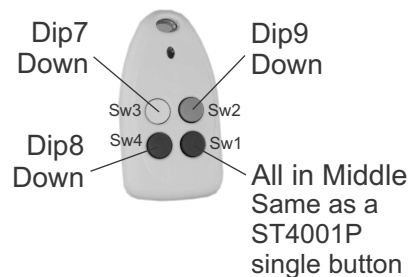
Example code



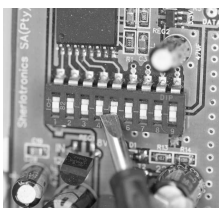
Open the Remote and set a code from 1 to 6. Leave 7;8;9 in the middle

Step 2.

Close the remote and refer to the picture to the right showing what dip-switch must be set on the receiver to make it work.



Step 3.



Open the SR4001 Receiver and set the same code you set on the remote from 1 to 6.

Step 4.

This example code will enable the Blue button or Sw4 to work on the receiver



Now Set 8 Down for Sw4 (BLUE) to work

You can set either 7;8 or 9 down on the receiver to work with the different buttons of the remote control.

Settings 7;8 & 9 are only applicable to the 4 Button remotes and do not apply to the Single Button remotes Model: ST4001P